

AVer



PTC330U PTC310U

AI Auto Tracking PTZ Cameras



AI



PRECISION MATTERS

The PTC330U/PTC310U AI Auto Tracking PTZ Camera makes powerful and reliable Pro AV capability available to everyone. Drawing inspiration from the AVer Professional PTZ Camera family, the PTC330U/PTC310U features in-house AI functions like Presenter Mode and Zone Mode auto tracking, thanks to Human Detection processing. Combine the 30X/12X Optical Zoom lens and 4K resolution with hybrid auto tracking and smooth PTZ functions for broadcasting, streaming, or recording. Your exciting journey of audio and video capturing starts here!



4K Ultra HD Resolution



30X/12X Optical Zoom



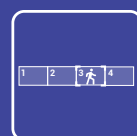
IP/HDMI/
USB/3G-SDI



Human Detection AI



Presenter Mode



Zone Mode



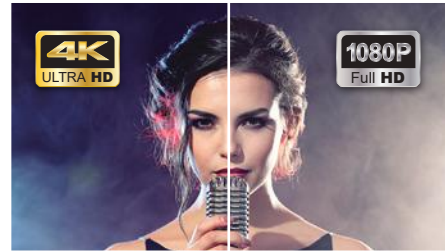
Intuitive Web UI



Exclusive Ceiling Mount

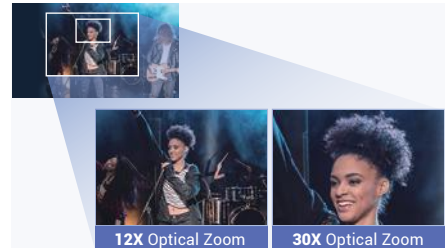
4K Output Resolution

Equipped with 4K resolution, the PTC330U/PTC310U provides ultra-precise auto tracking. The PTC330U/PTC310U also features a Sony sensor that maintains a truly impressive video performance through every frame of your production.



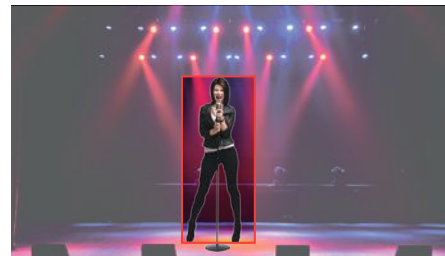
30X or 12X Optical Zoom

The zoom power of the PTC330U/PTC310U camera reaches an incredible 60X or 24X (including 2X Sensor Zoom). It works even while the camera is panning and tilting, allowing you to highlight content and rapidly change shooting angles. Operate a closer and clearer video feed with the unbeatable PTZ performance of the PTC330U/PTC310U.



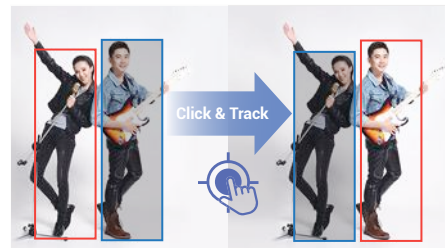
Human Detection AI

Welcome AVer's most advanced AI tool yet—Human Detection. This highly accurate processing function enables PTC330U/PTC310U to easily detect and capture human forms and moving objects in seconds. Never miss a tracking target again.



Click & Track

Redirect focus in an instant with the PTC330U/PTC310U. Simply click on a target to quickly adjust the shooting angle and initiate precise tracking. This advanced feature is easy for anyone to operate via both remote control and intuitive Web UI.



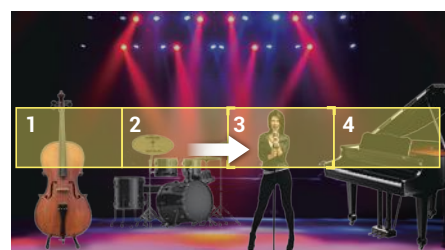
Presenter Mode

Track your target everywhere with Presenter Mode. This feature gives presenters the flexibility to leave the stage and interact with the audience, all while being continuously tracked. The camera stays locked on its target, even if other people or objects get in the way.



Zone Mode

Zone Mode enhances your ability to capture content on multiple displays. Create up to four content zones to steadily capture the content on display rather than the presenter's movements.

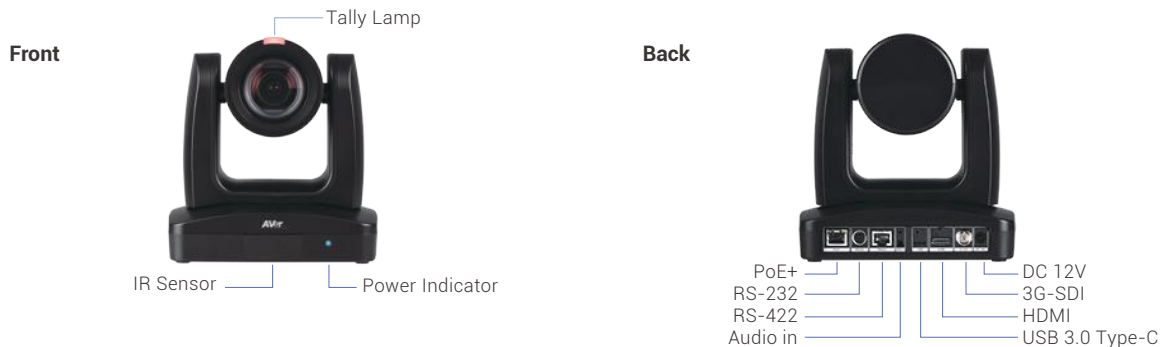


Product Specifications

Model	PTC330U	PTC310U
Camera		
Image Sensor	1/2.5" 4K Exmor CMOS	1/2.8" 4K Exmor CMOS
Effective Picture Elements	8 Megapixels	8 Megapixels
Output Resolutions	4K/30, 4K/29.97, 4K/25, 1080p/60, 1080p/59.94, 1080p/50, 1080p/30, 1080p/29.97, 1080p/25, 1080i/60, 1080i/50, 720p/60, 720p/59.94, 720p/50	4K/30, 4K/29.97, 4K/25, 1080p/60, 1080p/59.94, 1080p/50, 1080p/30, 1080p/29.97, 1080p/25, 1080i/60, 1080i/50, 720p/60, 720p/59.94, 720p/50
Minimum Illumination	2.7 lux (IRE50, F1.5, 30fps)	0.4 lux (IRE50, F1.6, 30fps)
S/N Ratio	≥ 50 dB	≥ 50 dB
Gain	Auto, Manual	Auto, Manual
TV Line	1400 (Center)	1400 (Center)
Shutter Speed	1/1 to 1/32,000 sec	1/1 to 1/32,000 sec
Exposure Control	Auto, Manual, Priority AE (Shutter, IRIS), BLC, WDR	Auto, Manual, Priority AE (Shutter, IRIS), BLC, WDR
White Balance	Auto, Manual	Auto, Manual
Optical Zoom	30X	12X
Digital Zoom	12X	12X
Sensor Zoom	2X	2X
Viewing Angles	DFOV : 75° (Wide) to 3° (Tele) HFOV : 68° (Wide) to 2.8° (Tele) VFOV : 40° (Wide) to 1.6° (Tele)	DFOV : 78° (Wide) to 7° (Tele) HFOV : 70° (Wide) to 5° (Tele) VFOV : 42° (Wide) to 3° (Tele)
Focal Length	f = 4.8 mm (Wide) to 144 mm (Tele)	f = 3.9 mm (Wide) to 46.8 mm (Tele)
Aperture (Iris)	F = 1.5 (Wide) to 3.4 (Tele)	F = 1.6 (Wide) to 2.8 (Tele)
Minimum Working Distance	1.5 m to Infinity	0.3 m (Wide), 1.5 m (Tele)
Pan/Tilt Angles	Pan : ±170°, Tilt : +90° / -30°	Pan : ±170°, Tilt : +90° / -30°
Pan/Tilt Speed (Manual)	Pan : 0.1° to 100° / sec, Tilt : 0.1° to 100° / sec	Pan : 0.1° to 100° / sec, Tilt : 0.1° to 100° / sec
Preset Speed	Pan : 200° / sec, Tilt : 200° / sec	Pan : 200° / sec, Tilt : 200° / sec
Preset Positions	10 (IR), 256 (RS-232 / RS-422 / IP)	10 (IR), 256 (RS-232 / RS-422 / IP)
Camera Control - Interfaces	RS-232 (DIN8), RS-422 (RJ45), IP	RS-232 (DIN8), RS-422 (RJ45), IP
Camera Control - Protocols	VISCA (RS-232 / RS-422 / IP), PELCO-D & PELCO-P (RS-232 / RS-422), CGI (IP)	VISCA (RS-232 / RS-422 / IP), PELCO-D & PELCO-P (RS-232 / RS-422), CGI (IP)
Image Processing	Noise Reduction (2D / 3D), Flip, Mirror	Noise Reduction (2D / 3D), Flip, Mirror
Power Frequencies	50 Hz, 60 Hz	50 Hz, 60 Hz
AI Auto Tracking Functions		
Tracking Modes	Presenter Mode, Zone Mode	Presenter Mode, Zone Mode
Audio		
Channel	2ch Stereo	2ch Stereo
Codecs	AAC-LC (48 / 44.1 / 32 / 24K), G.711, PCM (8K)	AAC-LC (48 / 44.1 / 32 / 24K), G.711, PCM (8K)
Sample Rates	48 / 44.1 / 32 / 24 / 16 / 8 KHz	48 / 44.1 / 32 / 24 / 16 / 8 KHz
Interface		
Video Outputs	3G-SDI, HDMI, IP, USB	3G-SDI, HDMI, IP, USB
Audio Outputs	3G-SDI, HDMI, IP, USB	3G-SDI, HDMI, IP, USB
Audio Inputs	MIC in, Line in	MIC in, Line in
General		
Power Requirement	AC 100 - 240V to DC 12V/5A	AC 100 - 240V to DC 12V/5A
Power Consumption	18W	18W
PoE	PoE+	PoE+
Dimensions (W x H x D)	180.0 x 183.5 x 145.0 mm	180.0 x 183.5 x 145.0 mm
Net Weight	1.7 (±0.1) kg	1.7 (±0.1) kg
Application	Indoor	Indoor
Tally Lamp	Yes	Yes
Security	Kensington Slot	Kensington Slot
Remote Control	Infrared	Infrared
Operating Conditions	Temperature : 0 °C to +40 °C, Humidity : 20% to 80%	Temperature : 0 °C to +40 °C, Humidity : 20% to 80%
Storage Conditions	Temperature : -20 °C to +60 °C, Humidity : 20% to 95%	Temperature : -20 °C to +60 °C, Humidity : 20% to 95%
IP Streaming		
Resolution	4K 30fps	4K 30fps
Network Video Compress Formats	H.264, H.265, MJPEG	H.264, H.265, MJPEG
Maximum Frame Rate	4K 30fps or 1080p 60fps	4K 30fps or 1080p 60fps
Bit-Rate Control Modes	VBR, CBR (selectable)	VBR, CBR (selectable)
Range of Bit-Rate Setting	512 Kbps to 32 Mbps	512 Kbps to 32 Mbps
Network Interfaces	10 / 100 / 1000 Base-T	10 / 100 / 1000 Base-T
Multi-Stream Capability	2 (RTSP / Web Page), 1080p 60fps (max.)	2 (RTSP / Web Page), 1080p 60fps (max.)
Network Protocols	IPv6, IPv4, TCP, UDP, ARP, IMCP, IGMP, HTTP, DHCP, RTP / RTCP, RTSP, RTMP, VISCA over IP	IPv6, IPv4, TCP, UDP, ARP, IMCP, IGMP, HTTP, DHCP, RTP / RTCP, RTSP, RTMP, VISCA over IP
NDI®/HX Capability	Yes (optional)	Yes (optional)
USB		
Connector	USB 3.0	USB 3.0
Video Format	MJPEG	MJPEG
Maximum Video Resolution	2160p	2160p
USB Video Class (UVC)	UVC 1.1	UVC 1.1
USB Audio Class (UAC)	UAC 1.0	UAC 1.0
Web UI		
Live Video Preview	Yes	Yes
Camera PTZ Control	Pan, Tilt, Zoom, Focus, Preset Control	Pan, Tilt, Zoom, Focus, Preset Control
Camera/Image Adjustment	Exposure, White Balance, Picture	Exposure, White Balance, Picture
Network Configuration	DHCP, IP Address, Gateway, Subnet Mask, DNS	DHCP, IP Address, Gateway, Subnet Mask, DNS
Software Tools		
IP Search and Configuration Tool	Support Windows® 7 or later	Support Windows® 7 or later
Warranty		
Camera	3 Years	3 Years
Accessories	1 Year	1 Year
Package Contents		
Camera, Remote Control, RS-232 In/Out Cable, Din 8 To D-Sub 9 Cable, Power Adapter, Power Cord, Cable Ties (x 5), Screws (x 10), Cable Fixing Plates (x 2), Ceiling Mount Brackets (x 2), Quick Start Guide		
Optional Accessories		
AVer CL01 PTZ Camera Controller, L-Type Wall Mount		

* Specifications may vary depending on location and are subject to change without notice.

Product Appearance



©2020 AVer Information Inc. All rights reserved.
All brand names and logos are trademarks of their respective companies.

www.aver.com



Distributor/Dealer

www.vectordigitals.net

202006